

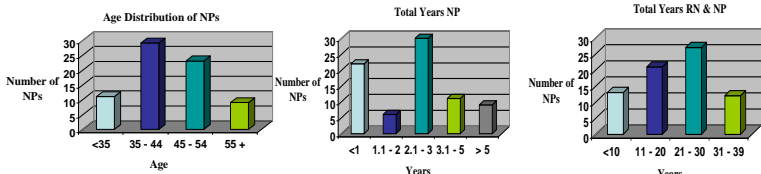
NPs in British Columbia, 2009

Profile of Positions and Practice

A SURVEY OF 78 NPs TO IDENTIFY: Where NPs practice / What NPs do in their practice / How NPs work with others

Profile of BC NPs

Average age – 44 years
 Average number of years as RN/NP - 21 years
 65% provide primary health care
 29% provide specialty health care
 6% provide NP education



Alison Roots, RN, MHSM, PhD(c)

Marjorie MacDonald, RN, PhD

University of Victoria

British Columbia, Canada

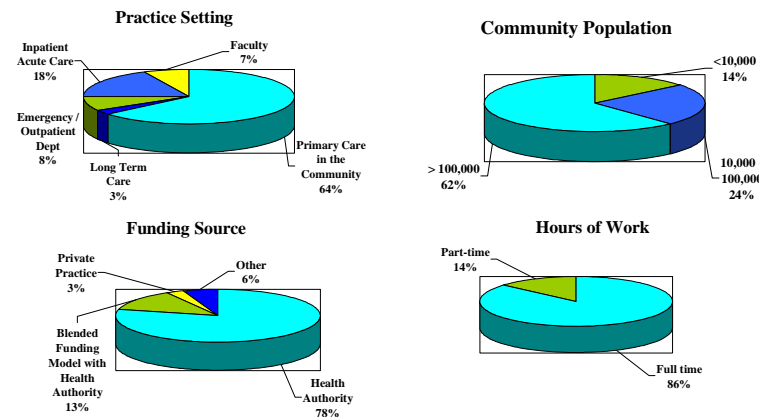
NPs are receiving patient referrals from:

(in order of frequency)	% NPs
General Practitioners	56%
Mental Health Practitioners	40%
Other NPs	35%
Home Care	33%
Public Health	30%
Specialist Physicians	26%
Pharmacists	23%

17% NPs have a part-time teaching position with a NP program

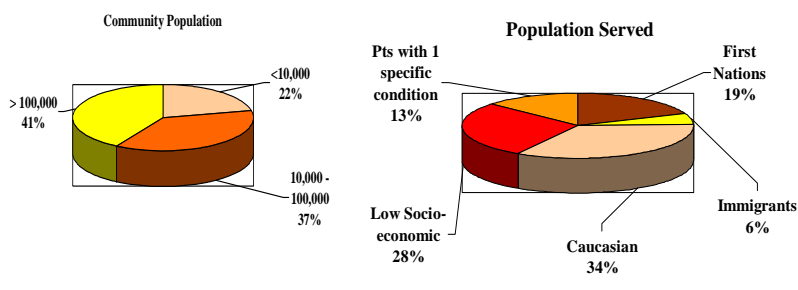
Practice Environment

71% NPs work in sole NP settings



Primary Care in the Community – 64% NPs

Populations Served and Services Provided



Primary Care Practice in the Community

What does it look like

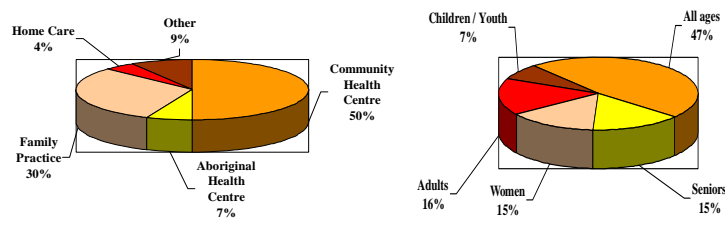
Frequency of patient care activities	NPs Time
Chronic Illness	25%
Wellness care / Prevention	22%
Episodic Care – Minor illness/ injury	17%
Mental Health	13%
Health Promotion	9%
Episodic care – Major Illness/ injury	4%
Community Outreach services	5%
Palliative Care	1%

Frequency of presenting symptoms	NPs treating every daily	NPs treating at least 1 X weekly
Musculoskeletal Pain / Injury	52%	34%
Anxiety / Depression	48%	34%
Acute Cough	46%	43%
Skin Disorders	41%	43%
Fever	27%	41%
Fatigue	25%	54%
Low Back Pain	23%	52%
Recurrent Chest Pain	22%	41%

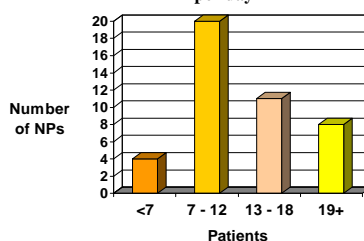
Frequency of medications prescribed	NPs prescribing every daily	NPs prescribing least 1 X weekly
Vitamins	59%	25%
CNS agents	55%	25%
Cardiovascular agents	46%	21%
Contraceptives	36%	34%
Anti-infective agents	32%	41%
Skin & Mucous membrane agents	32%	36%
GI agents	25%	50%
Anti-hyperglycemic agents	25%	39%

Practice Setting in the Community

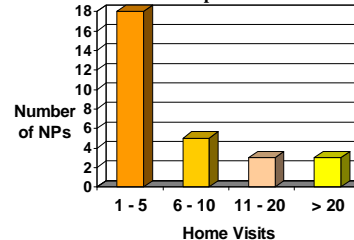
Population Served - by Age



Average # Patients per day



Average # Home Visits per month



Providing Increased Access:

Home visits – 67% NPs
 On Call – 9% NPs
 Community development activities – 72% NPs
 e.g. Education in the community
 Community planning
 Outreach services